

# Glucose Assist™

Supports normal blood sugar levels already  
in a healthy range\*



Formulated to support a reduction  
of post-meal glycemic response in  
healthy individuals\*

\*These statements have not been evaluated by the Food and Drug Administration. These products are not intended to diagnose, treat, cure, or prevent any disease.



# Maintaining Blood Sugar Balance is Critical

---

Glucose Assist™ supports a slower and more sustained release of glucose\*

A healthy blood glucose level is an important pillar of overall wellness. Though it helps enable a number of crucial roles, too much — or too little — blood glucose can create an issue. For instance, a rapid and sustained rise in post-meal glucose increases the demand for insulin, which can lead to the development of metabolic health concerns over time. On the other hand, an insufficient level of blood glucose (being the body's primary energy source) can leave a patient without the fuel they need to thrive.<sup>1,2</sup>

That's why **Glucose Assist™** from Standard Process® is formulated to support normal blood sugar levels for healthy individuals.^\*

Available in  
two flavors



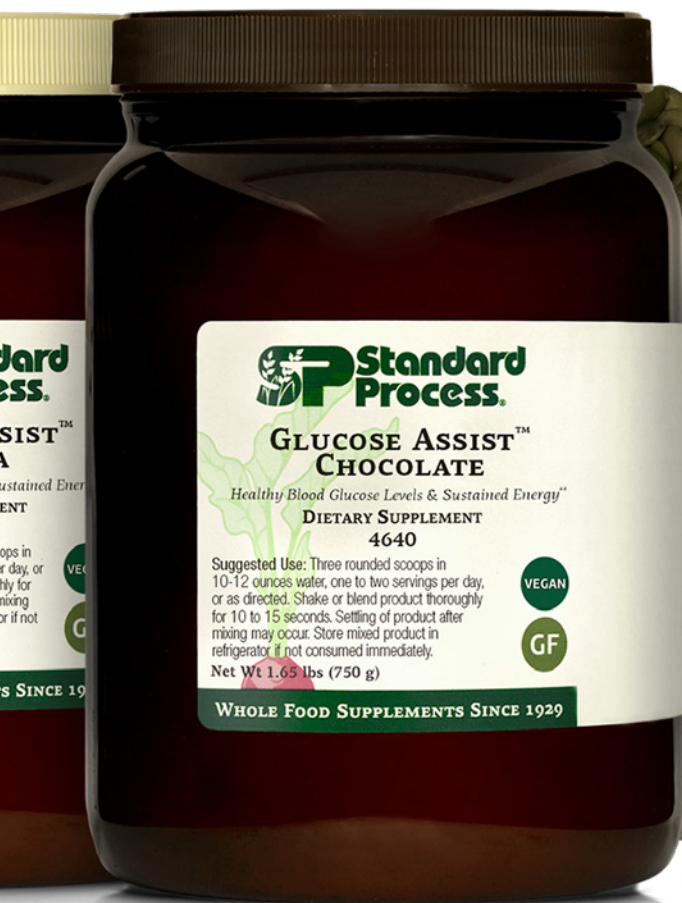
## High-Efficiency Fuel for the Body

---

In addition to supporting normal blood sugar levels already in a healthy range,\* Glucose Assist™ is a low-glycemic, whole food-based nutritional formula (data on file) which provides slow-release carbohydrates for sustained energy.







## Glucose Assist™ Contains Plant-Based Protein

Organic Pumpkin Seeds

Organic Ancient Oats

Organic Peas

Organic Buckwheat

## Glucose Assist™ Chocolate

**Suggested Use:** Three rounded scoops in 10-12 ounces water, one to two servings per day, or as directed. Shake or blend product thoroughly for 10 to 15 seconds. Settling of product after mixing may occur. Store mixed product in refrigerator if not consumed immediately.

## Glucose Assist™ Vanilla

**Suggested Use:** Three slightly rounded scoops in 10-12 ounces water, one to two servings per day, or as directed. Shake or blend product thoroughly for 10 to 15 seconds. Settling of product after mixing may occur. Store mixed product in refrigerator if not consumed immediately.

VEGAN

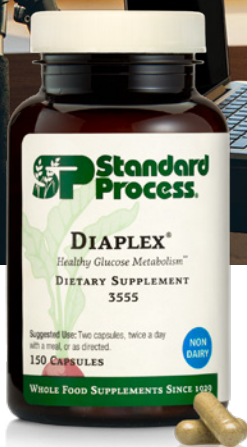
GF

- Supports post-prandial glycemic response in healthy individuals\*
- Is a uniquely designed nutritional formula with a blend of plant-based carbohydrates and proteins, providing a valuable source of all essential amino acids
- Helps support normal blood sugar levels already in a healthy range\*
- Supports a slower and more sustained release of glucose to help minimize acute blood sugar spikes and steady post-meal glucose levels in healthy individuals\*^

^with blood sugar levels already in a normal range

**Vegan** products are devoid of animal-based tissue, animal-based gelatin, or fish oils. They are also devoid of animal-based ingredients such as dairy, eggs, honey, beeswax, and lanolin. **Gluten-Free** products have been tested to verify they meet the regulations associated with the United States Food and Drug Administration's gluten-free labeling.

# Synergistic Products for Holistic Support



## Diaplex® HEALTHY SUGAR HANDLING SUPPORT AND PANCREAS FUNCTION\*

Diaplex®, a chromium supplement, supports healthy sugar handling to help maintain blood sugar levels already within normal range.\*

- Encourages healthy blood sugar levels already within a normal range when combined with a healthy diet\*
- Contains chromium, an essential nutrient involved in carbohydrate metabolism



## MediHerb® Gymnema CRAVINGS

Gymnema contains Gymnema leaf, which provides anti-sweetness activity by suppressing the ability to detect sweet tastes. Gymnema leaf has been traditionally used for centuries in Ayurvedic herbal preparations to:

- Help reduce sweet cravings
- Help suppress/inhibit sweet taste sensation\*



## MediHerb® Metabol Complex METABOLIC SUPPORT

Metabol Complex contains Fenugreek, Black Cumin seed, Bitter Melon and Cinnamon to provide multi-action metabolic support. These herbs have been traditionally used in Ayurvedic herbal preparations to:

- Support the metabolism of fats and sugars
- Support normal pancreatic and liver function\*

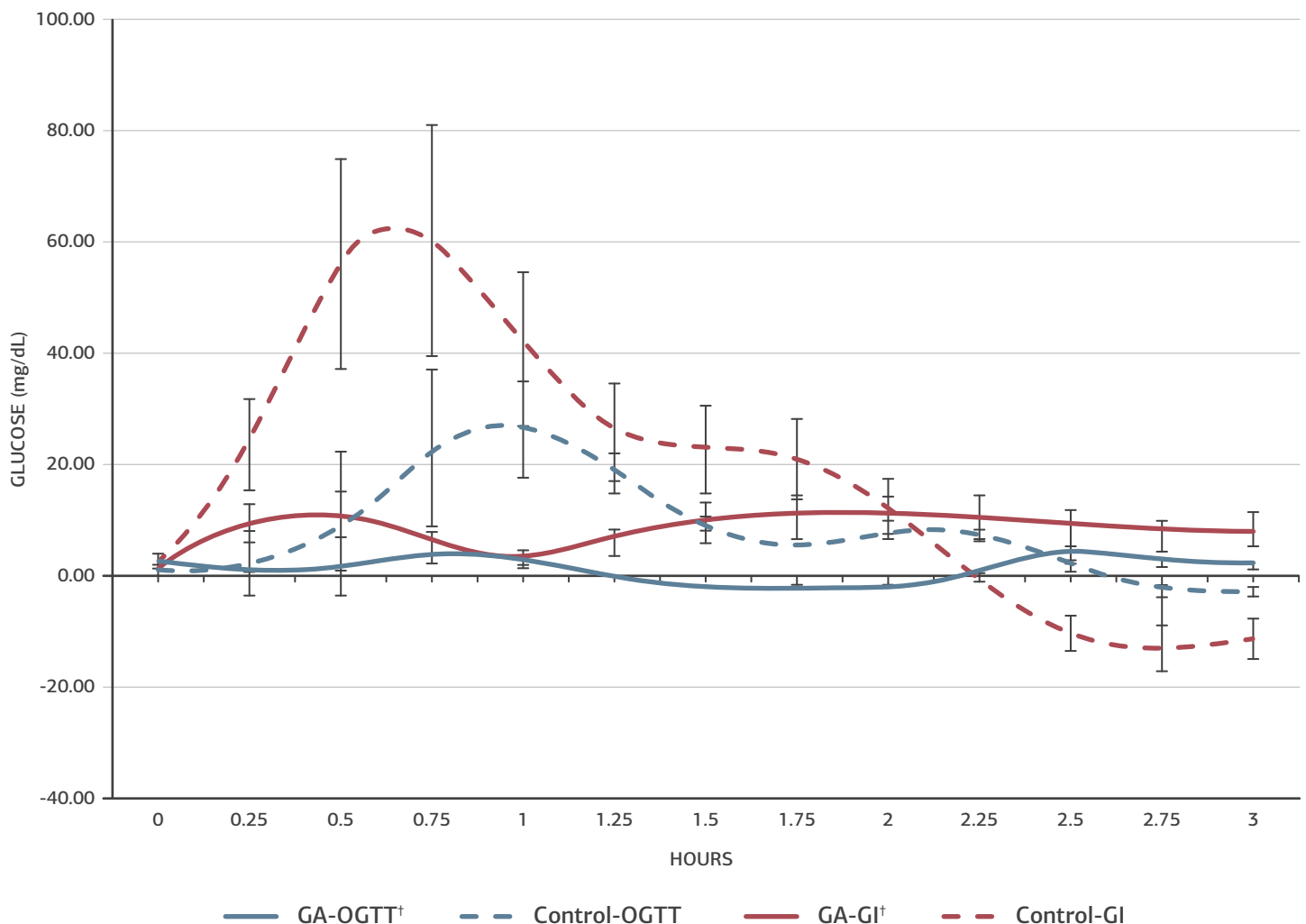
\*These statements have not been evaluated by the Food and Drug Administration. These products are not intended to diagnose, treat, cure, or prevent any disease.

# How It Works:

Glucose Assist™ provides a slower and more sustained release of glucose<sup>^</sup> because it contains **EnergySMART®**: a novel ingredient that is a slowly digestible complex carbohydrate.

Glucose Assist™ also provides protein-rich, plant-based nutrition sourced from peas, ancient oats, pumpkin seed and buckwheat that might help further minimize acute blood glucose spikes and potentially help with a steady blood glucose management.<sup>^\*</sup> This can support a reduction of post-meal glycemic response in healthy individuals,<sup>^\*</sup> which has been demonstrated by recent Standard Process clinical studies (data on file).<sup>†</sup>

Role of **Glucose Assist™ (GA)<sup>†</sup>** in oral glucose tolerance test (**OGTT**) and glycemic index (**GI**)



Normalized blood glucose levels in non-diabetic, otherwise healthy adults (n=8) in response to consumption of Glucose Assist™ Chocolate<sup>†</sup> (GA-OGTT and GA-GI) compared to controls (Control-OGTT and Control-GI).

<sup>†</sup>Study utilized an earlier version of Glucose Assist. The reformulated Glucose Assist has the same functional ingredients and is expected to have similar effects on blood glucose. Ingredient changes were made to improve flavor and introduce a strain of oats uniquely grown by Standard Process.

<sup>\*</sup>These statements have not been evaluated by the Food and Drug Administration. These products are not intended to diagnose, treat, cure, or prevent any disease.

<sup>^</sup>with blood sugar levels already in a normal range



# Together, We Can Change Lives

Changing lives is our passion and has been since our company's inception in 1929. This passion is what drove our founder, Dr. Royal Lee, to develop and pioneer the first whole food-based supplement on the market, the revolutionary Catalyn®.

---

## At Standard Process:

We change lives with our whole food philosophy.

We grow ingredients on our certified organic farm in Wisconsin.

We're serious about quality.

We make products to support the health of the whole family.

We team-up with health care professionals.

We've been trusted for generations. Our products have been changing lives since 1929.

1. Diepenbroek, C., Serlie, M.J., Fliers, E., Kalsbeek, A. & la Fleur, S.E. BioFactors (Oxford, England) 39, 505-513 (2013).

2. De Feo, P., et al. Journal of endocrinological investigation 26, 851-854 (2003).