

VF Hemp Oil and Canine Hemp Oil Complex™

Available Sizes:
A3040 30 mL
A3030 60 Softgels

ENDOCANNABINOID
SYSTEM SUPPORT



Formulated for dogs and cats,
VF Hemp Oil:

- Supports the endocannabinoid system
- Convenient dosing with a graduated dropper
- 1 ml delivers 15 mg of phytocannabinoids, which support the endocannabinoid system. Serving size is based on species and body weight.
- Non-genetically engineered and organic hemp



- Supports the endocannabinoid system
- Supports the body's natural inflammatory response function
- Ingredients that provide antioxidant activity
- Non-genetically engineered and organic hemp
- Combination of natural omega-3 fatty acids, including DHA and EPA
- Calamari oil certified from the independent nonprofit group Friend of the Sea®

VF Hemp Oil



Product Facts

Active Ingredient per 1 mL:

Organic Full Spectrum Hemp Extract 35 mg
(contains 15 mg naturally occurring phytocannabinoids)

Inactive Ingredient: Organic extra virgin olive oil.

Please consult the product label for dosage information and directions for use

Canine Hemp Oil Complex™

Product Facts

Active Ingredients per Softgel:

Proprietary Blend (Calamari oil, TrueBroc®*, broccoli aerial parts)	382 mg
Omega-3 Fatty Acids (Calamari oil)	115 mg
DHA (Calamari oil)	65 mg
EPA (Calamari oil)	27.5 mg
Organic Full Spectrum Hemp Extract (contains 7.5 mg naturally occurring phytocannabinoids)	16.5 mg
Glucoraphanin (TrueBroc®)*	2.5 mg

TrueBroc® is protected by trademarks and patents of Brassica Protection Products LLC: www.brassica.com/ip

Inactive Ingredients: Beeswax, dimagnesium malate, gelatin, glycerine, organic extra virgin olive oil, and water.

08

Please consult the product label for dosage information and directions for use

What is the Endocannabinoid System (ECS)?

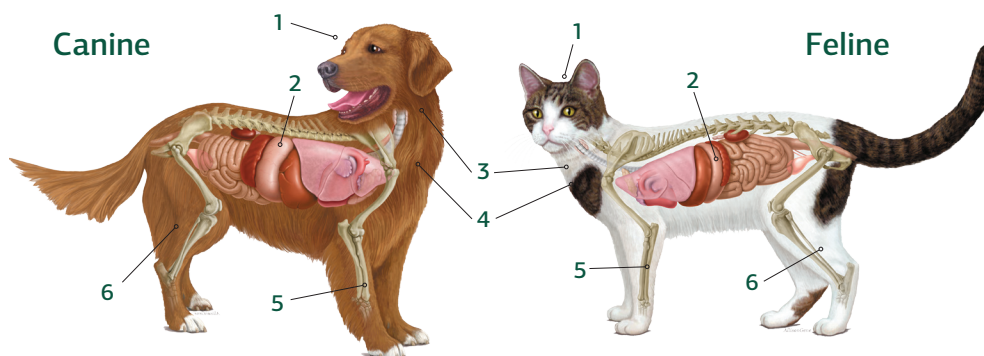
For pets and people alike, the endocannabinoid system (ECS) is perhaps the most important physiological system involved in establishing and maintaining optimal health as this ubiquitous system mediates a homeostatic balance of the nervous and immune systems in conjunction with other

organ systems.¹⁻⁴ The physiological effects of cannabinoids and their respective cannabinoid receptors are common among all mammals⁹ — a well-balanced ECS is associated with favorable health outcomes, while imbalance is often associated with a variety of health challenges.³

VF Hemp Oil and Canine Hemp Oil Complex™

ENDOCANNABINOID SYSTEM SUPPORT

The endocannabinoid system helps support:



- 1 Neuronal System
- 2 Gastro-Intestinal System
- 3 Endocrine System

- 4 Immune System
- 5 Bone System
- 6 Muscular System

What makes Standard Process hemp supplements better than other hemp-based supplements?

Grown on our Organic Farm

Our hemp is proudly grown on our certified organic farm, which helps preserve its exceptional quality from seed to supplement. It comes from organic, non-GMO strains.

Exceptionally Clean Production Techniques

Our Supercritical Fluid Extraction process provides a full-spectrum extract by utilizing carbon dioxide (CO2) instead of harsh solvents or chemical converting procedures. We are also able to dry the product quickly to help ensure freshness.

Strict Quality Standards

Each batch of hemp oil is independently tested to ensure it lives up to our high expectations. The result is an ingredient that is pure, potent, and certified organic.

The **great majority** of the raw plant ingredients used in our products are grown on our certified organic farm

Freshly picked crops are often processed within a day to maintain vital nutrients

We harvest more than **6.5 million** pounds of ingredients on our certified organic and sustainable farm

Healthy Soil. Healthy Plants. Healthy Lives.

Standard Process is a family-owned company dedicated to making high-quality and nutrient-dense therapeutic supplements for three generations.

We apply a holistic approach to how we farm, manufacture and protect the quality of our products. This comprehensive strategy ensures that our clinical solutions deliver complex nutrients as nature intended. It's how we define the whole food health advantage.

REFERENCES

1. Silver R J. *Animals (Basel)*. 2019 Sep; 9(9): 686. doi: 10.3390/ani9090686
2. Ritter S, Zadik-Weiss L, Almogi-Hazan O and Or R. *Rambam Maimonides Med J*. 2020; 11(1) e0006 *Rambam Maimonides Med J* | www.rmmj.org.il
3. Pertwee, R. G. *Pharmacology of cannabinoid CB1 and CB2 receptors. Pharmacology & therapeutics* 74, 129-180 (1997).
4. Institute of, M. *Marijuana and Medicine: Assessing the Science Base*. (The National Academies Press, 1999).
5. Freundt-Revilla J et al., *PLoS ONE*. 2018; 13(2):e0187197. <https://doi.org/10.1371/journal.pone.0187197>

 standardprocess.com

*These statements have not been evaluated by the Food and Drug Administration. These products are not intended to diagnose, treat, cure, or prevent any disease.

©2022 Standard Process Inc. All rights reserved. LN02759 09/22


WHOLE FOOD NUTRIENT SOLUTIONS