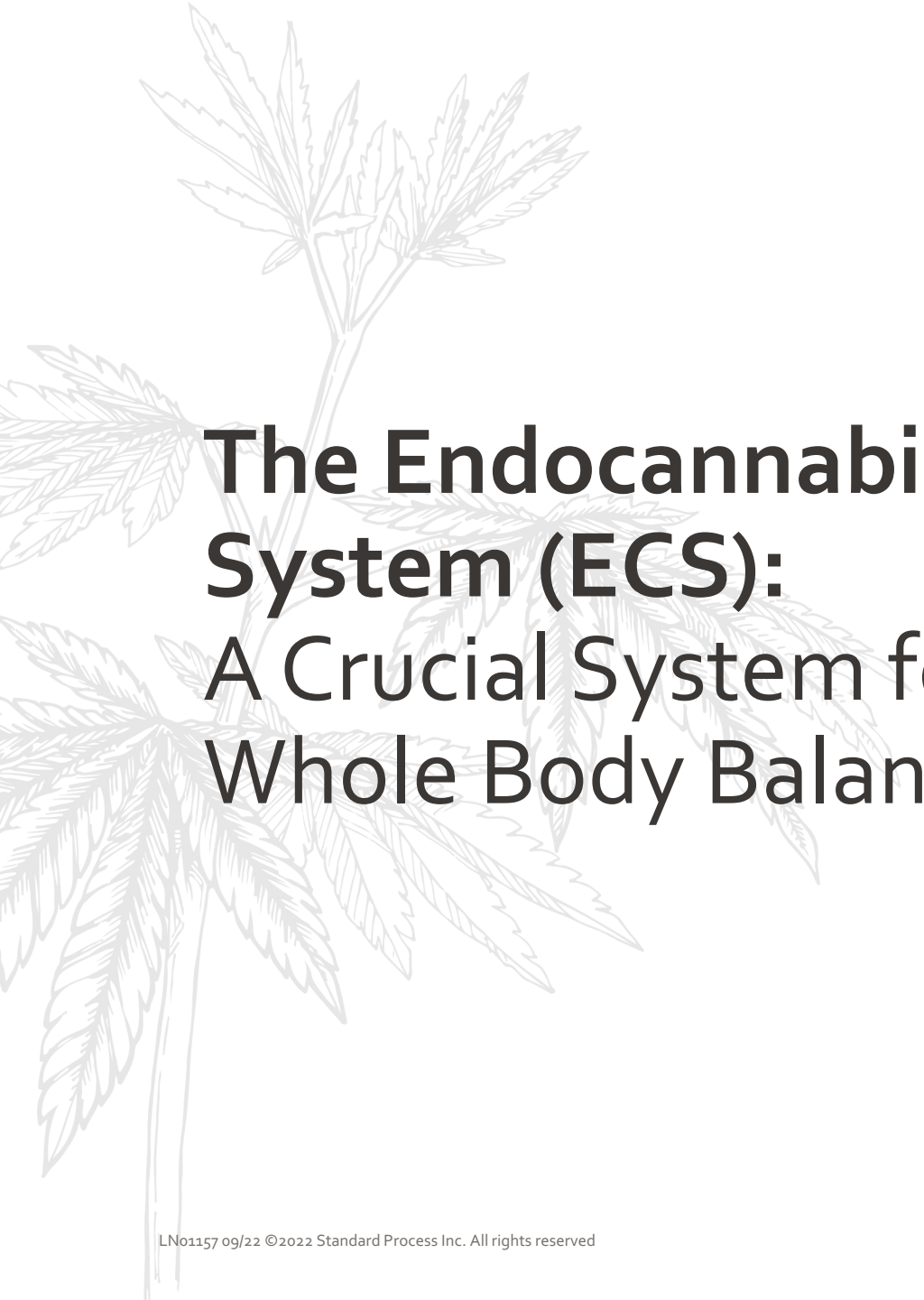




# Standard Process Veterinary Formulas™ Hemp Oil Products

Endocannabinoid System Support | 15 mg phytocannabinoids



# **The Endocannabinoid System (ECS): A Crucial System for Whole Body Balance**

- Perhaps the most important physiological system involved in establishing and maintaining optimal health
- Ubiquitous system that mediates a homeostatic balance of the nervous and immune systems in conjunction with other organ systems
- A well-balanced ECS is associated with favorable health outcomes, while imbalance is often associated with a variety of health challenges



# Marijuana, Hemp, CBD – What's the Difference?

- Marijuana and Hemp are varieties of Cannabis sativa L. The difference lies in the THC levels of each (the psychoactive agent that causes a “high”).
- Marijuana is bred to contain high levels of THC (typically 5-25%), but Hemp – by federal legal definition – must have THC levels  $\leq 0.3\%$ .
- CBD is just one of the phytocannabinoids found in cannabis plants. CBD refers to this single isolate and is classified by the FDA as a drug (Epidiolex is currently the ONLY FDA-approved CBD product, and is used for treatment of seizures in children).

# What's the Difference?

## Full Spectrum

- Hemp oils contain all 113 phytocannabinoids, plus terpenoids
  - Best-known phytocannabinoids: CBD and THC
- The hemp oil used in the **Standard Process hemp products** is a Full-Spectrum hemp oil that contains naturally occurring phytocannabinoids.
  - Each of these substances plays some role with respect to the ECS.


## Broad Spectrum

- Hemp oils are not CBD isolates, have naturally occurring phytocannabinoids, but may not contain all 113 phytocannabinoids plus terpenoids



# Is Hemp Legal?

- Agriculture Improvement Act of 2018 (also known as the Farm Bill of 2018) was signed into law on December 20, 2018. This legislation removes Hemp from the Controlled Substance Act and out from under the Drug Enforcement Administration's (DEA's) control.
- This means Hemp is no longer an illegal substance under federal law.
- This is a work in progress and individual state laws will change or be developed over time.
- The Food and Drug Administration (FDA) will continue to have authority over products that contain cannabis or cannabis derived components.
- Important to check with your local VMA on what their position is.



# Why choose Standard Process Veterinary hemp supplements?

## Grown on our Organic Farm

Our hemp is proudly grown on our certified organic farm, which helps preserve its exceptional quality from seed to supplement. Our hemp comes from organic, non-GMO strains.

## Exceptionally Clean Production Techniques

Our Supercritical Fluid Extraction process provides a full-spectrum extract by utilizing carbon dioxide (CO<sub>2</sub>) instead of harsh solvents or chemical converting procedures.

## Strict Quality Standards

Each batch of hemp oil is independently tested to ensure it lives up to our high expectations. The result is an ingredient that is pure, potent, and certified organic.

# Providing Options for Your Patients:

## VF Hemp Oil

Supports cats' or dogs' endocannabinoid system



## Canine Hemp Oil Complex™

3-in-1 Benefit for the Whole Body

- Supports dogs' endocannabinoid system
- Supports the canine body's natural inflammatory response function
- Contains ingredients that support antioxidant activity



# Providing Options for Your Patients:

## VF Hemp Oil contains

- Organic Hemp oil - 100mg (stalk and seed) containing 15mg phytocannabinoids
- Organic olive oil



## Canine Hemp Oil Complex™ contains

- Organic Hemp oil - 100 mg (stalk and seed) containing 15mg phytocannabinoids
- Calamari oil - Provides PUFAs which may act as precursors for endocannabinoids (lipid mediators) and are known to be involved in healthy inflammation processes
- TrueBroc® - Phytonutrients from TrueBroc® known for activating Nrf2/ARE pathways



# VF Hemp Oil

Convenient Liquid Format



# VF Hemp Oil

- Provides 15 mg of phytocannabinoids per mL to support the endocannabinoid system (ECS)\*
- Liquid form — convenient, flexible dosing with a graduated dropper
- Non-genetically engineered hemp
- Formulated for dogs and cats



Dog weight	Schedule
<5 lbs.	0.25 mL every other day
5-9 lbs.	0.25 mL / day
10-19 lbs.	0.50 mL / day
20-29 lbs.	0.75 mL / day
30-39 lbs.	1.00 mL / day
40-49 lbs.	1.25 mL / day
50-59 lbs.	1.50 mL / day
60-69 lbs.	1.75 mL / day
70-79 lbs.	2.00 mL / day
80-89 lbs.	2.25 mL / day
90-99 lbs.	2.50 mL / day
100-110 lbs.	2.75 mL / day

Or as directed by your veterinarian.

Cat weight	Schedule
<7 lbs.	0.25 mL every other day
7-11 lbs.	0.25 mL / day
12-17 lbs.	0.50 mL / day
18-25 lbs.	0.75 mL / day

Or as directed by your veterinarian.

**Warnings:** Not for human consumption. Keep out of the reach of children and animals. In case of accidental overdose, contact a health professional immediately.

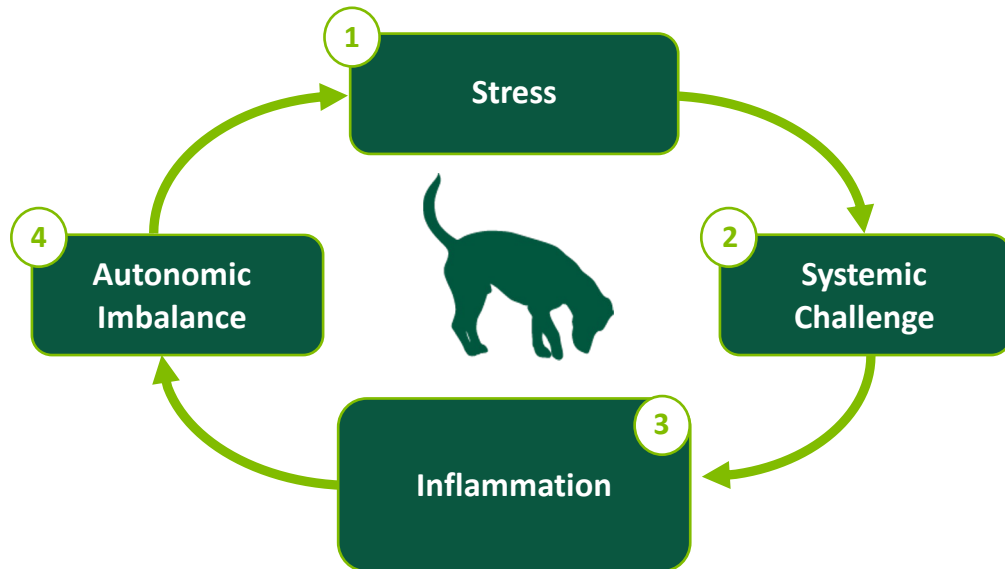
# Canine Hemp Oil Complex™

3-in-1 Benefit for Whole Body Support

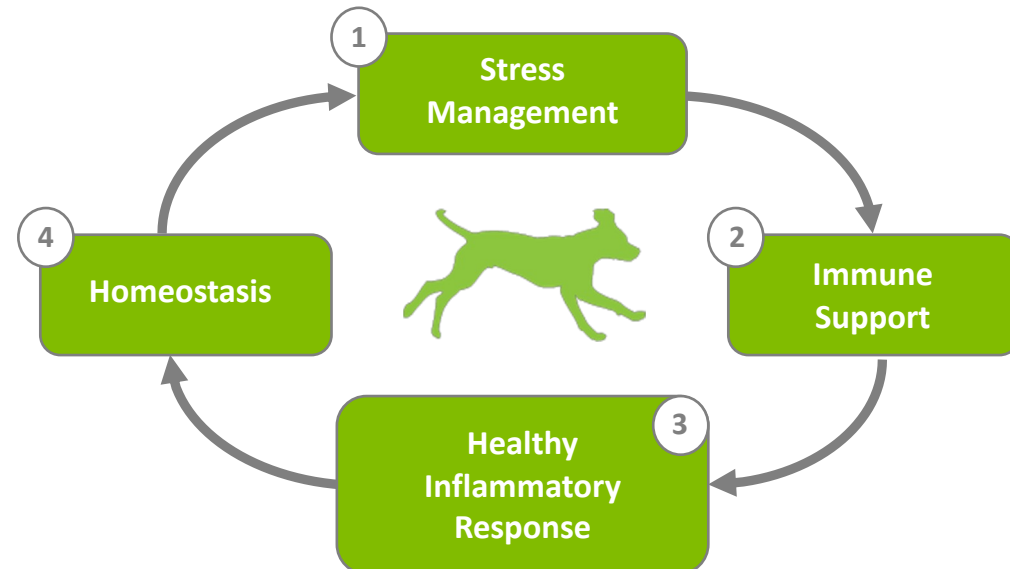


# Healthy Inflammatory Response Supports Systematic Balance

## SYSTEMIC IMBALANCE



## SYSTEMIC BALANCE



# The Endocannabinoid System: Receptor Activation is Key

Understanding the ECS and the Role of CB1 and CB2 Receptors



# "Silent" Homeostatic Role

## CB1

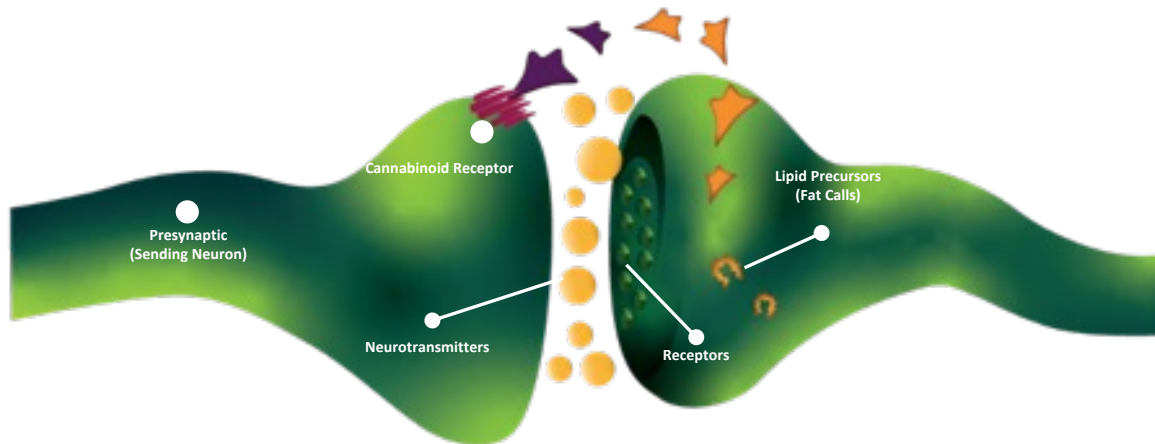
- BRAIN
- CENTRAL NERVOUS SYSTEM
- Lungs
- Muscles
- Gastrointestinal Tract
- Reproductive Organs
- Liver
- Bone Marrow
- Pancreas



## CB2

- IMMUNE SYSTEM
- CENTRAL NERVOUS SYSTEM
- Spleen
- Bones
- Skin
- Liver
- Bone Marrow
- Pancreas

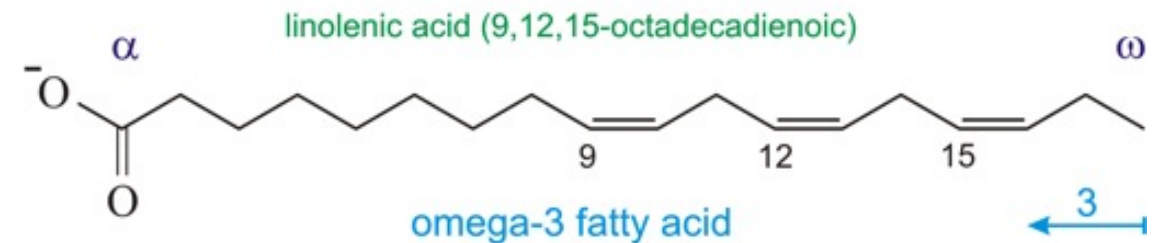
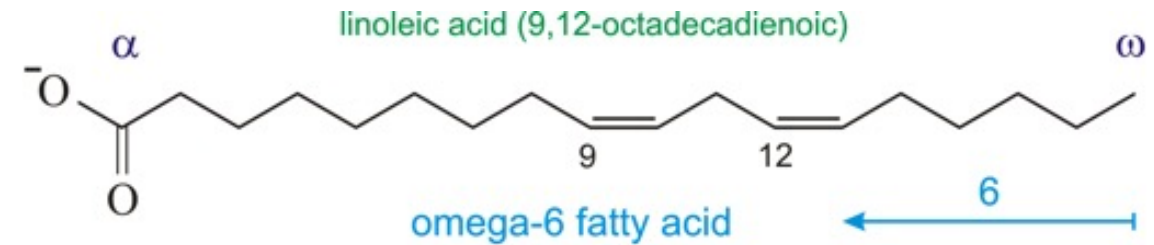
The ECS is a major lipid signaling network comprised of endogenous, lipid-based, physiological ligand molecules (endocannabinoids) that play a pro-homeostatic role in peripheral organs besides the central nervous system (CNS).



# Nutritional Support of ECS

Canine Hemp Oil Complex™ is a combination of well-balanced polyunsaturated fatty acids (PUFAs, Omega-3 oil) delivering essential fatty acids needed for the formation of specialized lipid mediators for a healthy inflammatory response.

Hemp oil may support the resolution phase of the inflammatory processes by providing PUFAs which are known to be precursors to endocannabinoids.



# TrueBroc<sup>®</sup> Supports Antioxidant Activities

## INTAKE OF TRUEBROC<sup>®</sup>

TrueBroc<sup>®</sup> is metabolized into sulforaphane via our gut microflora

## Nrf2 INDUCER

Sulforaphane induces the Nrf2 pathway and triggers antioxidant activity

## ANTIOXIDATION

Helps to capture and inactivate free radicals

## BLOCKS NF-κB

Promotes healthy inflammatory response pathways



# Canine Hemp Oil Complex™

- Contains 15 mg phytocannabinoids per 2 softgels
- Support for the endocannabinoid system\*
- Support for the body's natural inflammatory response function\*
- Ingredients that provide antioxidant activity\*



## CANINE HEMP OIL COMPLEX™

*Whole Body Health*

### A3030



**60 SOFTGELS**

**WHOLE FOOD SUPPLEMENTS SINCE 1929**

**Product Facts**

**Active Ingredients per softgel:**

Proprietary Blend (Calamari oil, TrueBroc®*, broccoli aerial parts)	382 mg
Omega-3 Fatty Acids (Calamari oil)	115 mg
DHA (Calamari oil)	65 mg
EPA (Calamari oil)	27.5 mg
Organic Full Spectrum Hemp Extract (contains 7.5 mg naturally occurring phytocannabinoids)	16.5 mg
Glucoraphanin (TrueBroc®)*	2.5 mg

TrueBroc® is protected by trademarks and patents of Brassica Protection Products LLC: [www.brassica.com/ip](http://www.brassica.com/ip)

**Inactive Ingredients:** Beeswax, dimagnesium malate, gelatin, glycerine, organic extra virgin olive oil, and water.

**Cautions:** If animal's condition worsens or does not improve, stop product administration and consult your veterinarian. Safe use in pregnant animals or animals intended for breeding has not been proven. Administer during or after the animal has eaten to reduce incidence of gastrointestinal upset.

For use in dogs only. To support endocannabinoid system.	Dog weight	Schedule
<b>Directions for use:</b> Administer orally. Can be given during or after mealtime.	1-10 lbs	1 softgel every other day
	11-50 lbs	1 softgel 1x/day
	51-100 lbs	2 softgels 1x/day
	101+ lbs	3 softgels 1x/day
Or as directed by your veterinarian.		

**Warnings:** Not for human consumption. Keep out of the reach of children and animals. In case of accidental overdose, contact a health professional immediately.

Standard Process Inc. 1200 West Royal Lee Drive Palmyra, WI 53156



8 12122 01362 8 08

# Synergistic Products

## Canine Musculoskeletal Support

Provides a wide range of essential nutrients to support optimal musculoskeletal function

## Canine or Feline Immune System Support

Provides nutritional and biochemical support for healthy immune cells and tissues

## Canine or Feline Whole Body Support

Provides general multisystem support for daily maintenance of all body systems, with emphasis on a healthy endocrine system



# Veterinary Formulas Hemp Oil Product Options



Product #	Product Name	Content	SLP
A3040	VF Hemp Oil	1 fl oz (30 mL)	\$72.50
A3041	VF Hemp Oil 6 pack and counter display	6 bottles	\$435.00
A3030	Canine Hemp Oil Complex™	60 softgels	\$77.00